

The State of the Young Child in Wayne County

Needs Assessment Data to Guide Workgroup Strategy

Abstract

The Early Childhood Coalition for Wayne County Kids (ECC) has focused on utilizing data compiled from multiple sources to gain a comprehensive overview about the state of young children in Indiana in order to follow the stated vision of all Wayne County children being prepare and ready to succeed in kindergarten.

As engagement in the coalition has grown, so has the need for an easy-to-view snapshot of data available. This report presents 2018 data from the Indiana Early Learning Advisory Committee gathered from 8 sources statewide. The data has been broken down into workgroup-specific areas to increase usability. In addition to the data, data analysis questions, additional workgroup-specific resources, and a shared-language glossary have been included.

Introduction

The ECC held the initial workgroup session on December 4, 2018. At this meeting, the three vital strategies were outlined: early identification of developmental challenges, increased number of quality childcare situations, and comprehensive efforts and interventions to ensure readiness. Each of these 3 strategies were assigned workgroups. In the following analysis, data is provided specific to these 3 vital strategies which can be used by the workgroups to develop plans for change.

Data

Data contained in this needs assessment is current as of March 2019 and was provided by a variety of sources connected to young children of Wayne County and their families.



Problem Statement

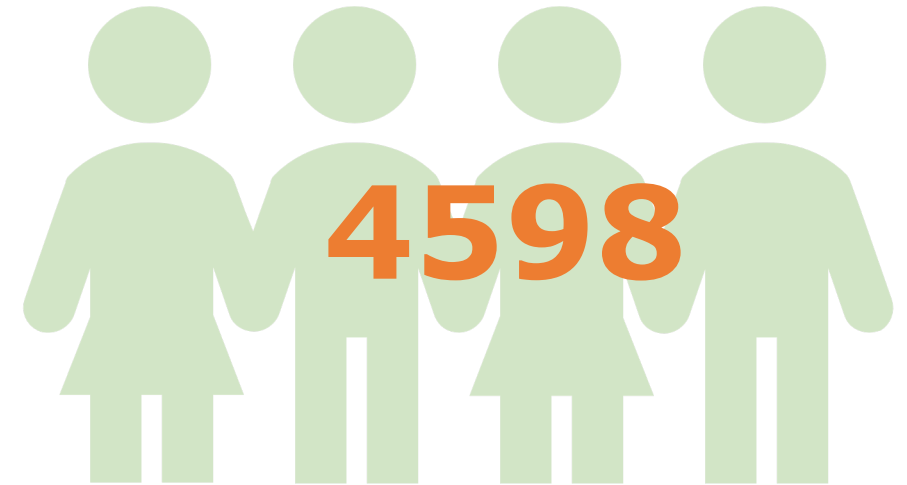
Problem Statement: Wayne County has not clearly defined how to determine if a child is prepared and ready to succeed in Kindergarten.

How do we define and measure Wayne County children's preparedness for kindergarten?

The identified vital strategies:

1. Early identification
2. Access to quality childcare
3. Plan for kindergarten readiness

Young Children Defined* As:
Age 0 - 5



Wayne County Reality

DCS reports: 1,741 Wayne County children abused or neglected during past 6 years

[Mike Emery](#), [Richmond Palladium-Item](#) Published 5:25 p.m. ET Feb. 22, 2019 | Updated 5:38 p.m. ET Feb. 22, 2019

Child neglect, abuse rises in Wayne County: 'Some things you can't forget'

[Mike Emery](#), [Palladium-Item](#) Published 9:26 a.m. ET Feb. 16, 2018

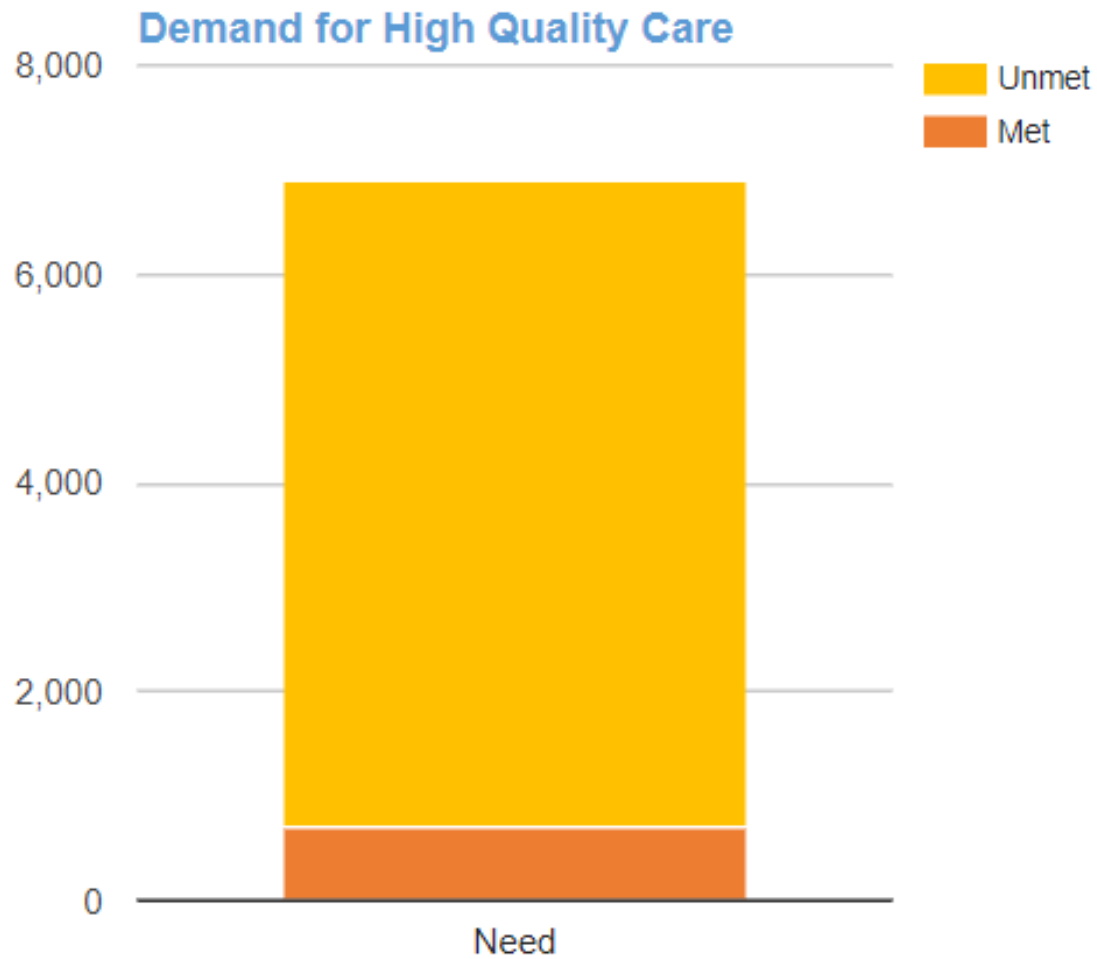
'We have a long way to go' to help Wayne County children

[Richmond Palladium-Item](#) Published 10:30 a.m. ET July 21, 2018

Official: Drugs fuel skyrocketing neglect cases

[Mike Emery](#), mwemery@pal-item.com Published 12:03 p.m. ET Feb. 18, 2017 | Updated 5:51 p.m. ET Feb. 18, 2017





Wayne County 2019

Paths to QUALITY Utilization

	Centers	Homes	Ministries	School Age	Head Starts	Preschools
Number of known ⁸ programs	4	25	6	4	6	2
Number of regulated programs	4	25	1	0	5	0
Number of programs in Paths to QUALITY	3	17	1	0	5	0
Number of "high quality" programs	3	6	1	0	5	0

Supply & Demand

	Infant	Toddler	Preschool	School Age
Number of Children ^{1,2}	799	1670	2579	5068
Percentage of children that are low income (below 185% FPL) ³	74%	74%	74%	44%
Number of children with all parents in the labor force ⁴	522	1091	1684	3603
Capacity of regulated programs ⁵	153	427	618	352
Capacity of Paths to QUALITY™ programs	141	304	412	194
Capacity of "High Quality" programs ⁶	103	181	298	120
Enrollment in regulated programs	42	188	631	45
Enrollment in Paths to QUALITY™ programs	39	154	551	37
Enrollment in "High Quality" programs	26	104	521	26
Unmet Need for "High Quality" care ⁷	419	910	1386	3483

Wayne County
2019

Proposed Workgroup Solutions



Early
Identification



Quality
Childcare



Kindergarten
Readiness





Early Childhood Coalition

for Wayne County Kids



Early Identification of Developmental Challenges

Assessment of Needs and Strengths

First Steps (2018) has outlined the following developmental areas to be assessed when determining needs and strengths to determine appropriate services.



Assessor Requirements

First Steps (2018) outlines specific requirements for covered personnel who conduct assessments:

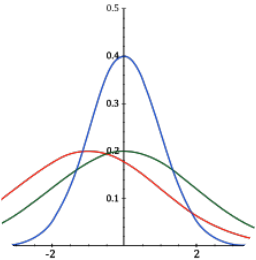
1. **Profession** – social workers, speech/language pathologists, etc.
2. **Education** – aligns to profession
3. **Continuing education** requirements



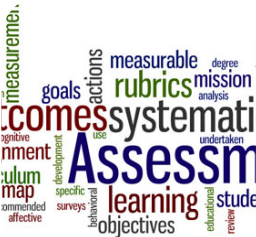
Eligibility Criteria



Under the age of 3



Experienced developmental delays on specified scale



Diagnosed physical or mental condition with high probability of future developmental delay

Benefits of Early Intervention

Early intervention elicits positive benefits for young children, their families, and society as a whole:

- ❑ Schools see reduced need for special education service provision
- ❑ Nation experiences decreased health care costs



Individualized Family Service Plan (IFSP) Components

Major Goals

- Plan for treatment

Measurement Plan

- Outcome assessment plan

Services to be Provided

- Includes: audiology, family education, health services, physical therapy, transportation, and social work services

Service Provision Location

- Home = best practice

Service Provision Timeframe

- Planned duration of services

Payment

- Payer plan and assessment of options

Transition Plan

- Plan after child ages

2017-18 Outcomes

Average Age at Referral

- 13 months

July 2018 to September 2018

- 15 new ISFP established

Children Served (2018)

- 199 total
- 171 served in natural environment consistent with best practices

Exited Services

- 43 – preschool special education
- 2 – no longer needed services (under 3)
- 15 – declined services

Wayne County Data (10/01/17 – 09/30/18)



Example Questions Working Groups Can Begin To Answer:

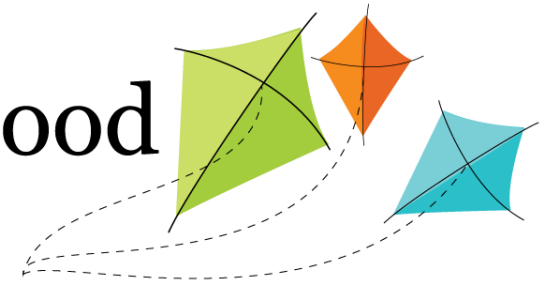
- ☐ How many First Steps qualified providers do we have in Wayne County?
- ☐ How many children need First Steps services in Wayne County?
- ☐ What barriers exist to early identification of developmental challenges of children in Wayne County?
- ☐ What steps can be taken to increase early identification of developmental challenges in Wayne County?
- ☐ What costs would be associated with expanding early identification of developmental challenges in Wayne County?
- ☐ Are there other areas of developmental challenges that would be best addressed by early identification?



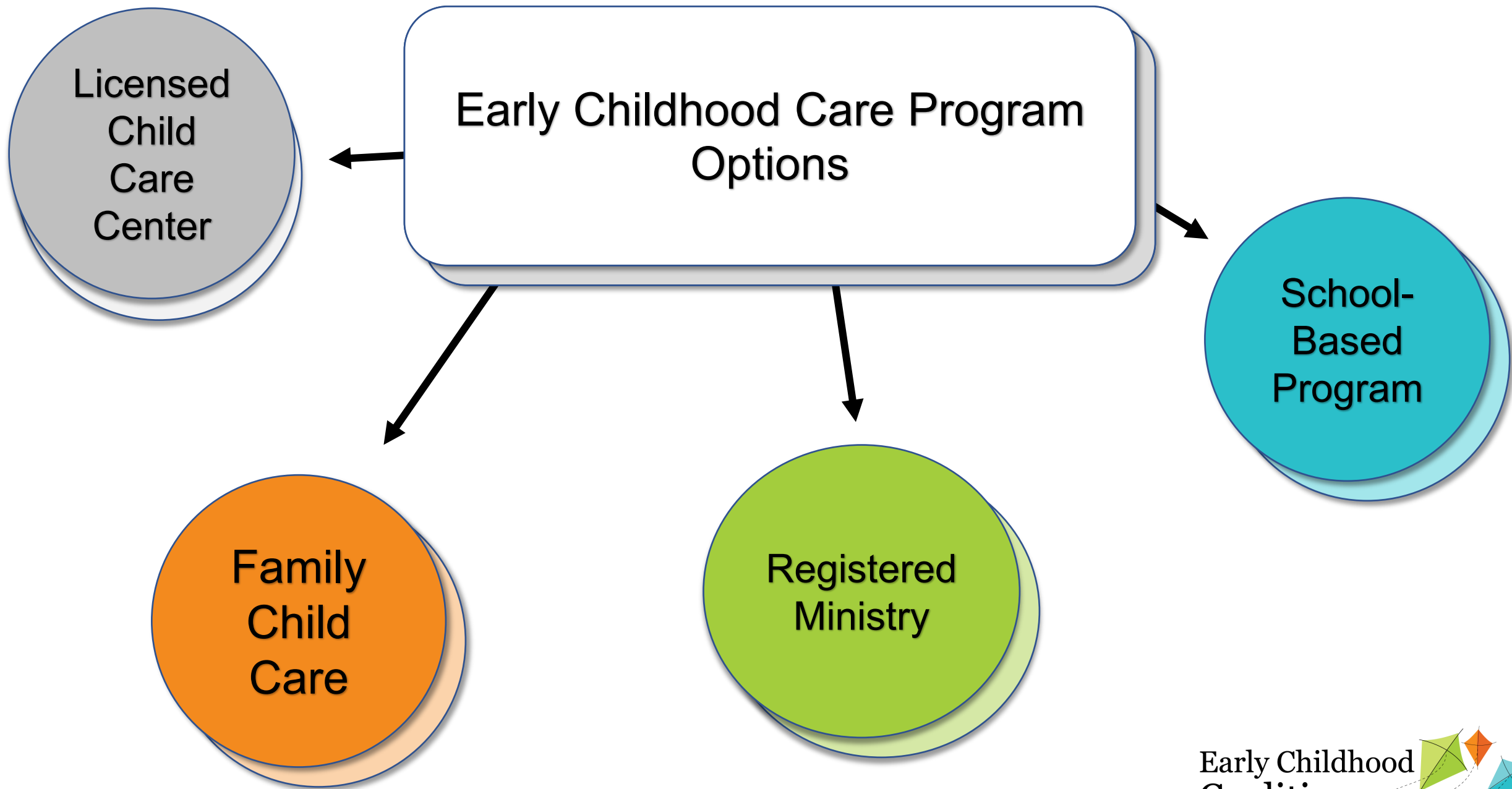


Early Childhood Coalition

for Wayne County Kids



Increase the Number of Quality Childcare Situations



High-Quality Childcare

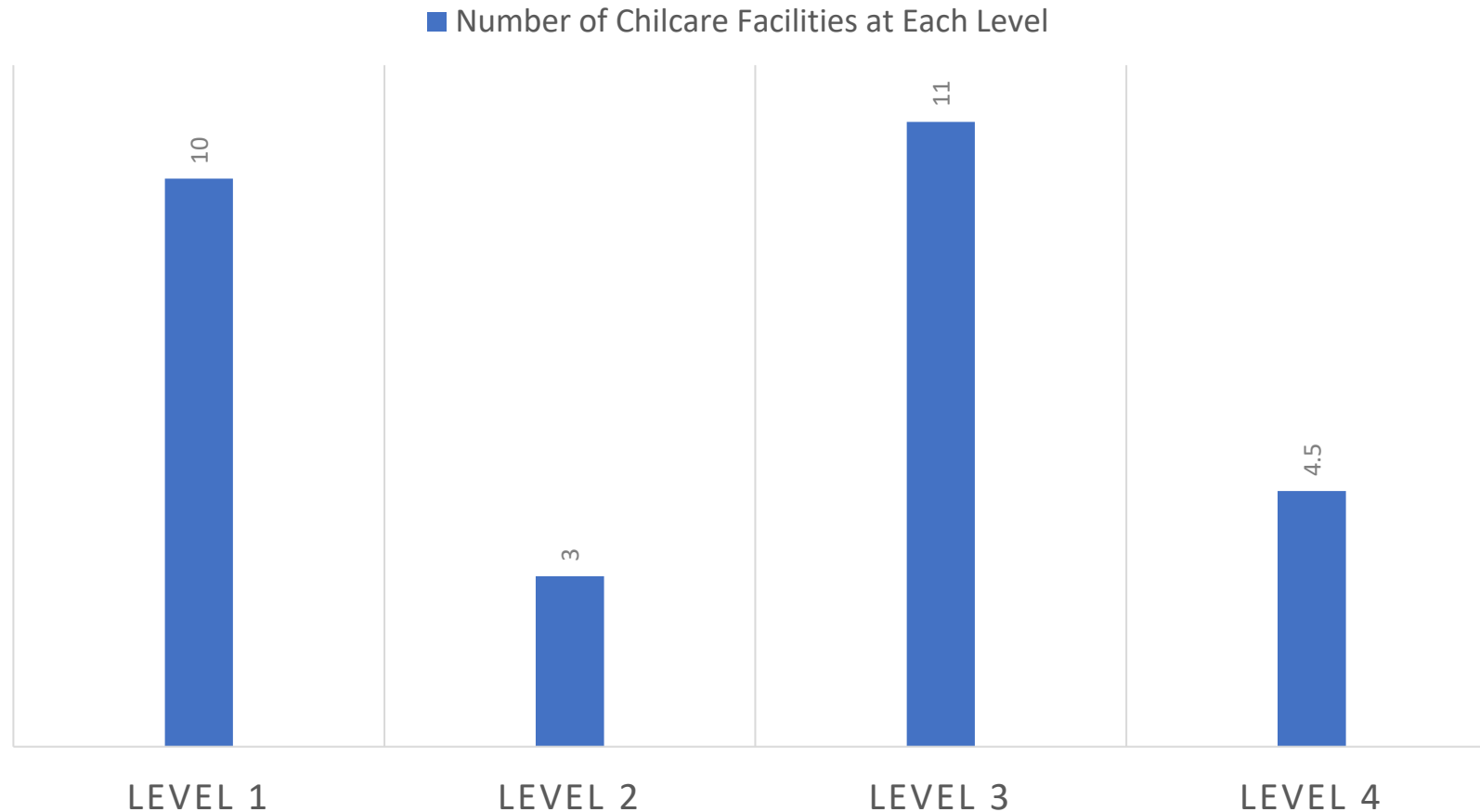


High-quality programs are at Level 3 or 4 and have:

- ✓ Age-appropriate educational curriculum, year round
- ✓ Trained teachers who receive ongoing professional development, yearly
- ✓ Teachers continuously assess strengths and weaknesses of children
- ✓ Level 2 and 1 requirements met

Wayne County Paths to QUALITY Options

NUMBER OF CHILDCARE FACILITIES IN WAYNE COUNTY AT EACH PTQ LEVEL



34 Programs in
Wayne County
not Participating
in Paths to
QUALITY
Program

Long-Term Outcomes of High-Quality Childcare

**Better prepared
for kindergarten**

**Successful
throughout
academic careers**

**More productive
in workplace
settings**

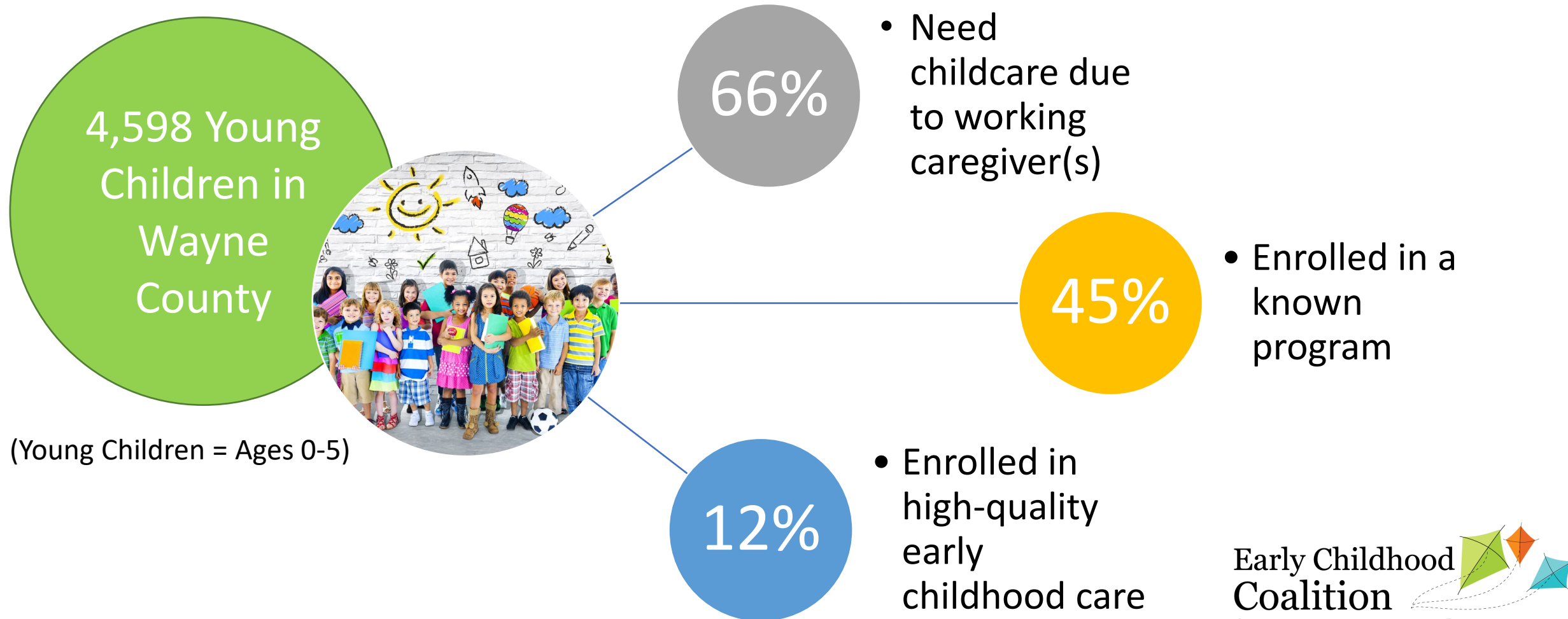
**Earn more over
lifetimes**

**Fewer health
issues**

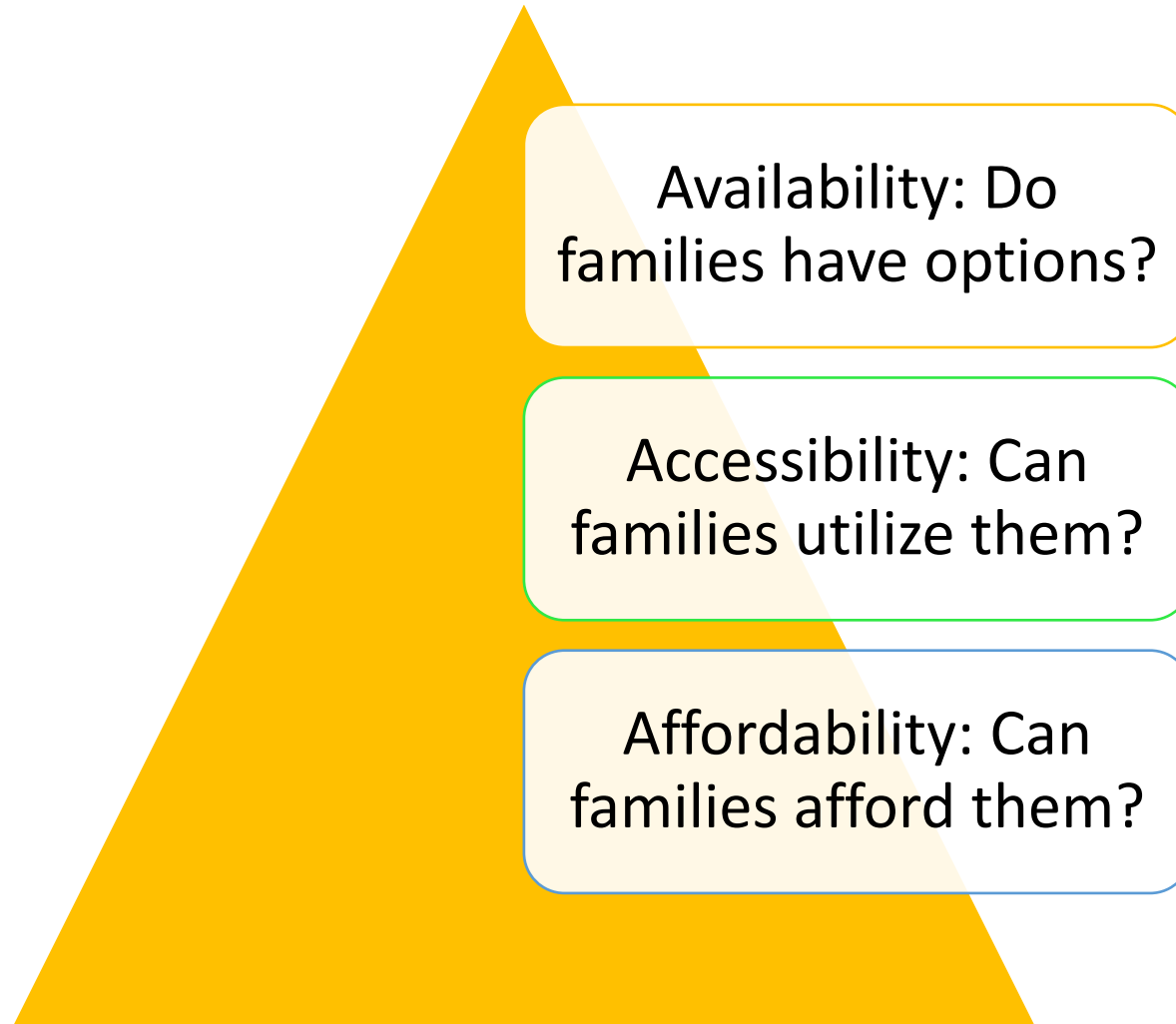
**Less likely to
utilize social
safety net**

**Decreased risk of
criminality**

Care Needs in Wayne County



Important Factors in HQ Childcare



High-Quality Program Stats

**14 High-Quality
Programs in
Wayne County**



**7
in Childcare
Centers**



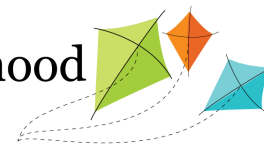
**1
School-Based**



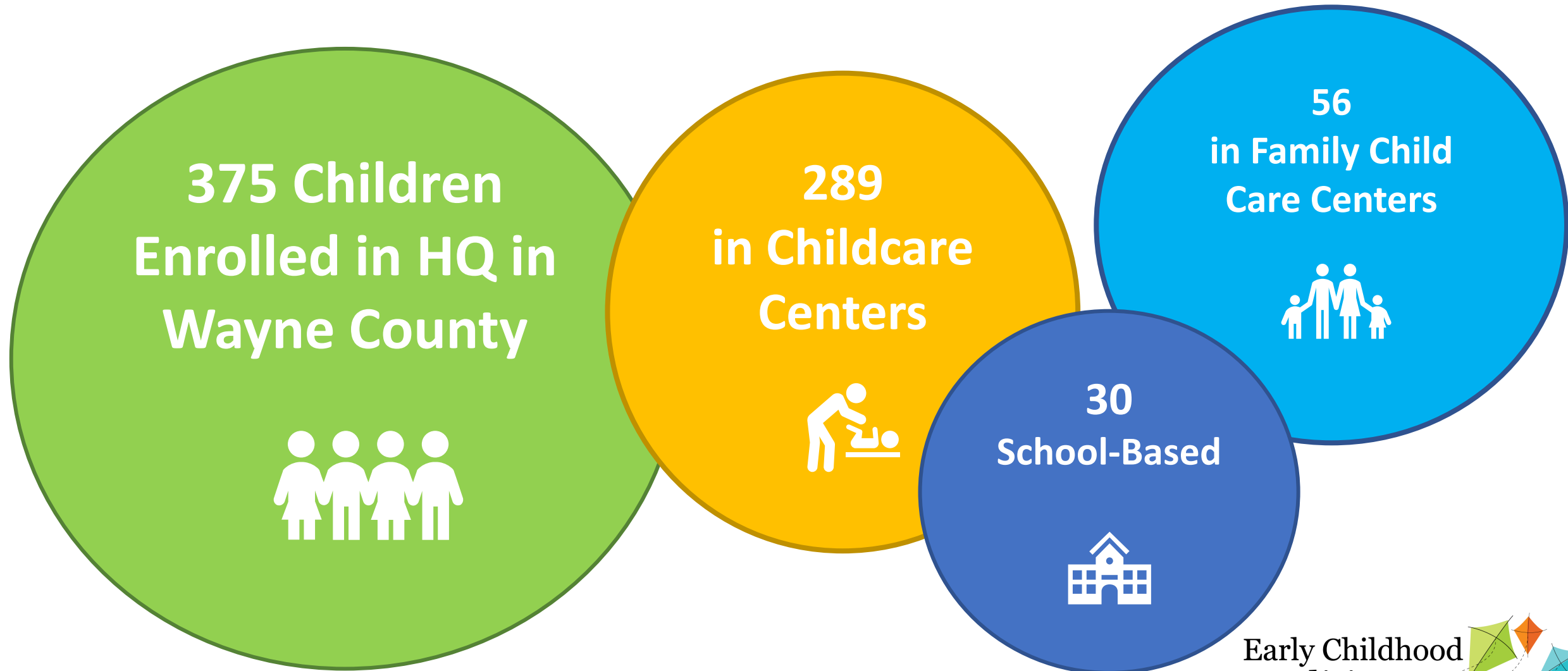
**6
in Family Child
Care Centers**



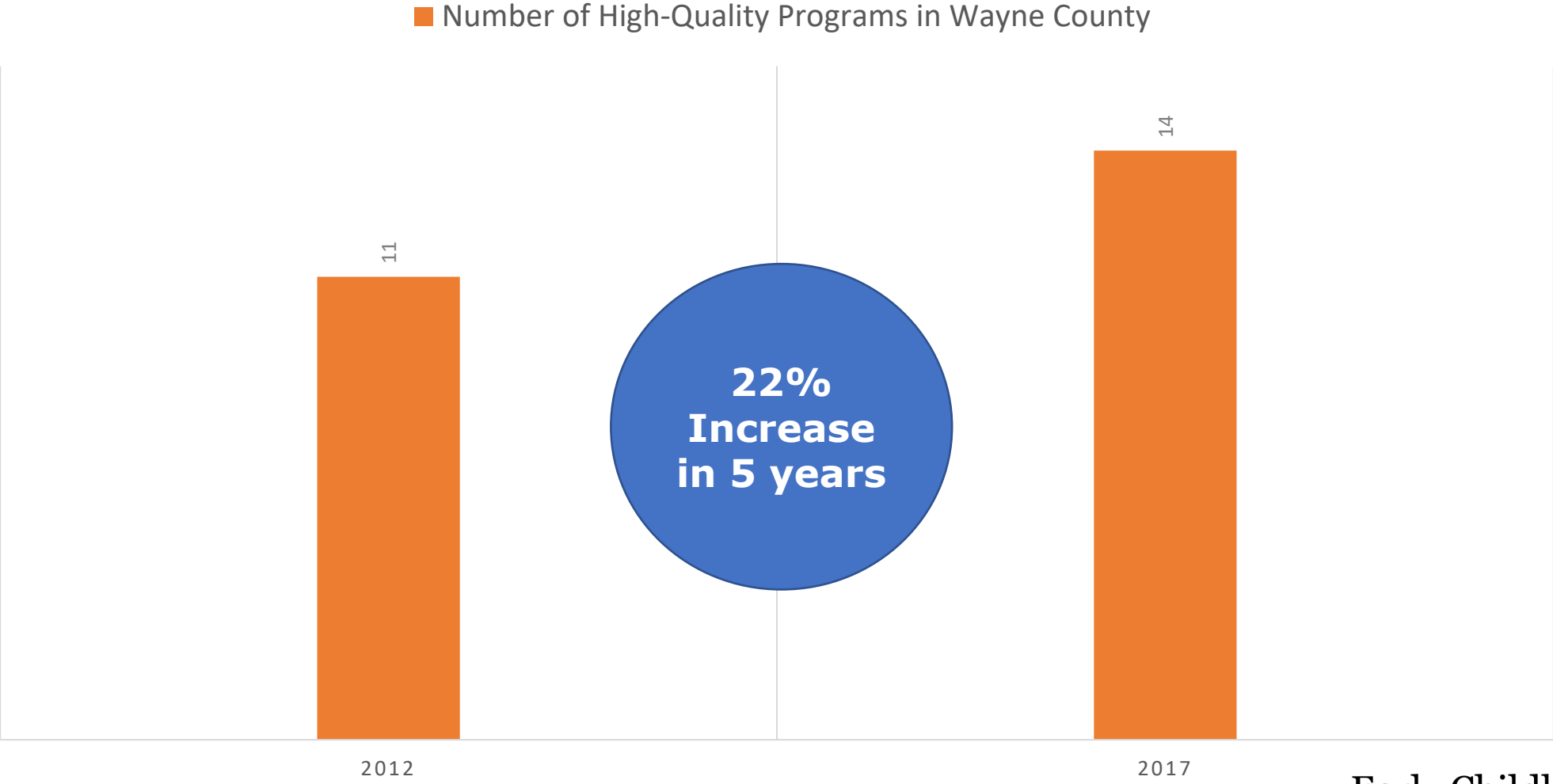
**Early Childhood
Coalition**
for Wayne County Kids



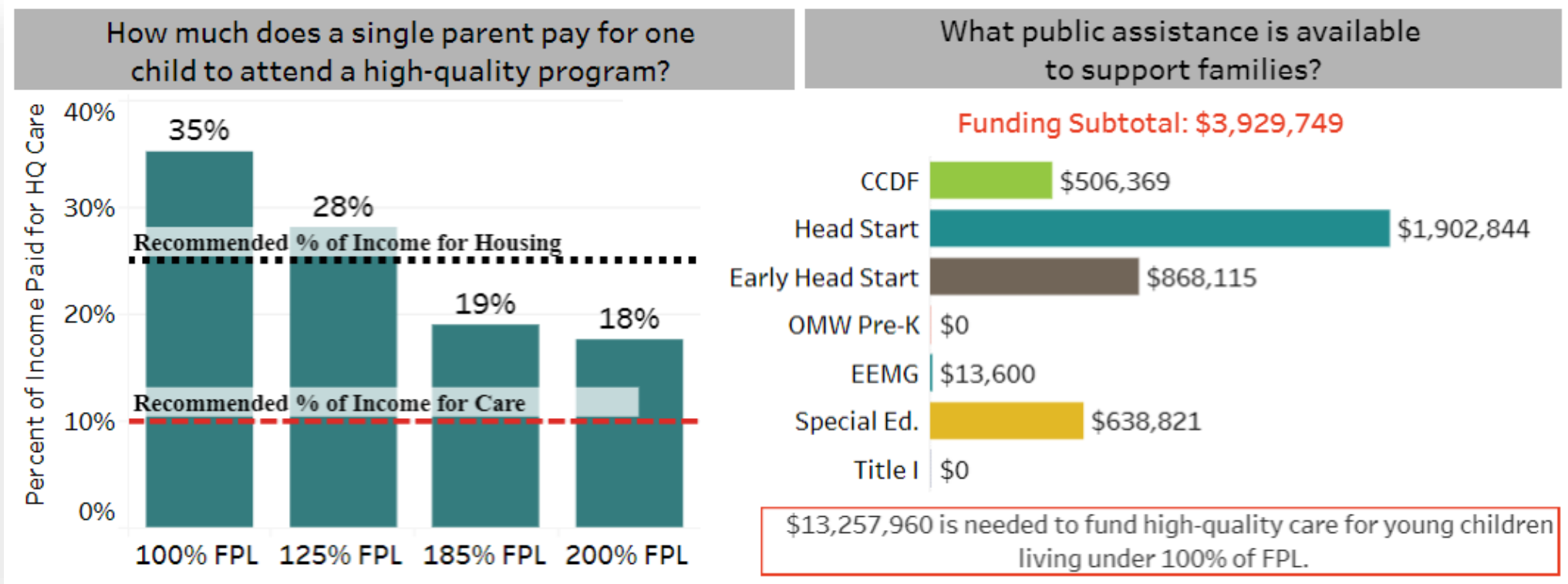
High-Quality Program Stats



NUMBER OF HIGH-QUALITY PROGRAMS IN WAYNE COUNTY IN 2012 AND 2017



Cost Associated with High-Quality Programs



Example Questions Working Groups Can Begin To Answer:

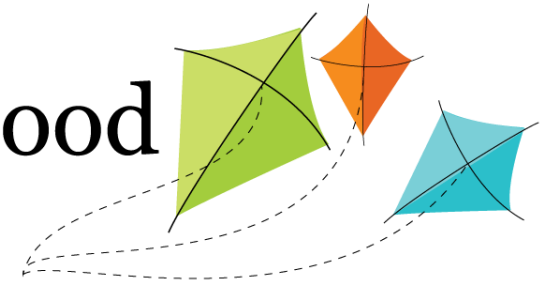
- ☐ What public assistance is available to support child engagement in high-quality childcare?
- ☐ Does funding exist to help childcare facilities engaged in PTQ?
- ☐ What contributes to enrollment, by age, in high-quality early care?
- ☐ How can we engage the faith community in the provision of high-quality care?
- ☐ How many more students can be enrolled in the high-quality programs that currently exist in Wayne County?
- ☐ How accessible are the current high-quality programs in Wayne County?
- ☐ What's the right number of high-quality programs to meet demand?





Early Childhood Coalition

for Wayne County Kids



Comprehensive Efforts and Interventions to Ensure
Readiness for Kindergarten

Growth Factors Related to Kindergarten Readiness



Social



Emotional



Physical



Cognitive



Academic



Wayne County Kindergarten Stats

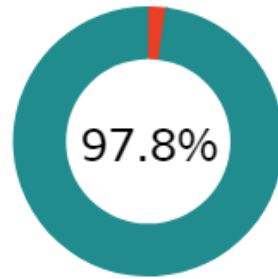
How many students are ready for kindergarten?



Currently, Indiana has no uniform way to measure kindergarten readiness across the state.

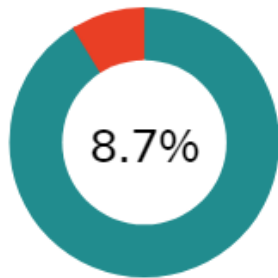
How many children are enrolled in kindergarten?

Wayne 787



How many children repeated kindergarten?

Wayne 68

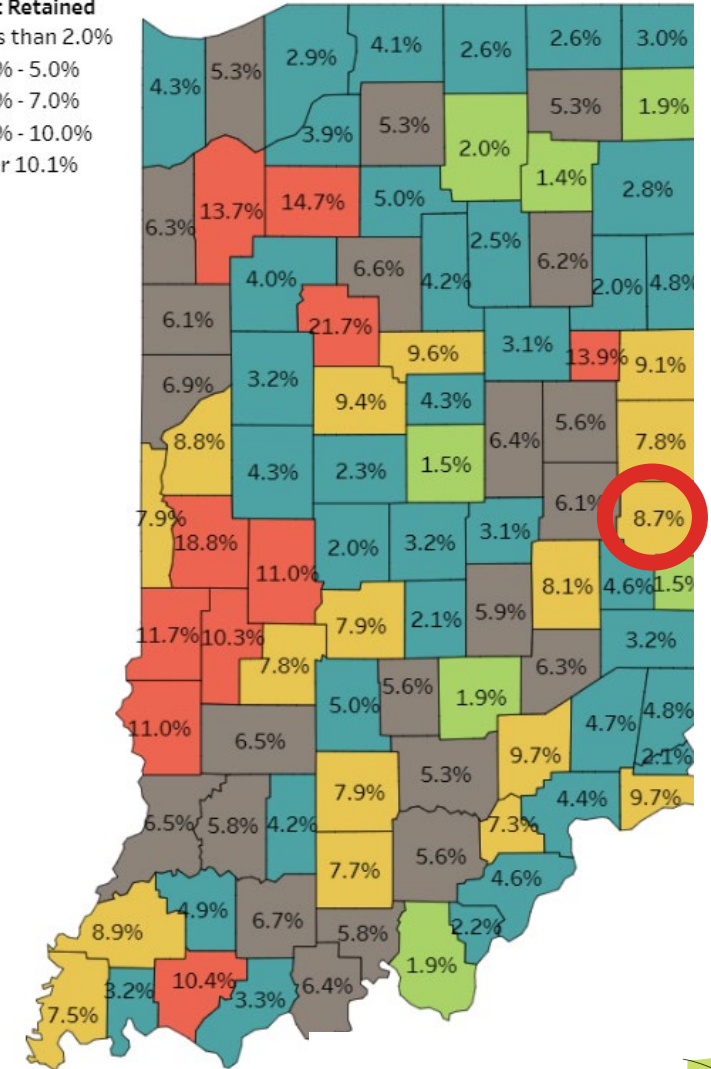
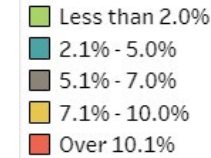


Cost Associated with Kindergarten Retention in Wayne County

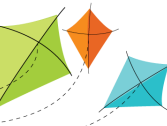
\$474,504

Retention Count x Average Daily Membership = Cost of Retention

Percent Retained



Early Childhood
Coalition
for Wayne County Kids



Future Option: On My Way Pre-K

Started in 2015 in 5 Indiana counties, now in 20 counties

- Shown to have potential to improve lower income 4-year-olds' early learning skills and readiness for kindergarten
- Major impact in areas of language comprehension, early literacy skills, and overall school readiness

Family eligibility

- Income below 127% of FPL
- Child must be 4 and starting Kindergarten in following year
- Caregivers in household must be working, going to school, or attending job training

Facility eligibility

- Located in eligible county
- Top-ranked at level 3 or 4 in PTQ or be accredited by an approved national or regional accrediting body



Future Option: Indiana's Office of Early Childhood and Out-of-School Learning Capacity Building Grant



76%

of Hoosiers agreed that it was important that four-year-old Hoosier children spend time in an organized pre-K program.

74%

of Hoosiers agreed that high-quality pre-K helps children academically prepare for kindergarten.

64%

of Hoosiers agreed that children who attend high-quality pre-K have stronger social-emotional development.

Future Option: Indiana's Office of Early Childhood and Out-of-School Learning Capacity Building Grant

Capacity-building grants may be used for the following purposes:



- ☐ Training and professional development of teaching staff
- ☐ Classroom materials that demonstrate increased outcomes for children or increased instructional practices for educators
- ☐ Evidence-based curriculum or instructional materials including professional development for teaching staff to utilize the curriculum
- ☐ Family engagement activities or materials and/or marketing and communication materials
- ☐ Other relevant needs to help expand capacity and/or improve quality programming to help programs reach Paths to QUALITY level 3 or 4, which is the requirement for a provider to be eligible to be an On My Way Pre-K provider

Example Questions Working Groups Can Begin To Answer:

- ☐ Have other communities developed a clear definition of kindergarten readiness?
- ☐ How can current funding be used to implement local programs focused on kindergarten readiness?
- ☐ What elements are important in a kindergarten readiness program?
- ☐ What current kindergarten readiness options currently exist?
- ☐ How do current options for kindergarten readiness serve the Wayne County population?
- ☐ How do the other workgroup areas of focus tie in to kindergarten readiness?



References

Early Learning Indiana. (2017). *On the Road to Pre-K Expansion*. Retrieved from Early Learning Indiana: <https://www.earlylearningin.org/wp-content/uploads/2017/06/OntheRoadtoPreKExpansion.pdf>

Family and Social Services Administration. (2018). *On My Way Pre-K*. Retrieved from Office of Early Childhood and Out-of-School Learning: <https://www.in.gov/fssa/carefinder/4932.htm>

First Steps. (2018). *Indiana First Steps Early Intervention Policy Manual*. Retrieved from Indiana Family & Social Services Administration: https://www.in.gov/fssa/files/First_Steps_Policy_Manual_FINAL.pdf

Fortman, B. (2018). *The Long-Term Impact of High-Quality Early Learning Opportunities*. Retrieved from Early Learning Indiana: <https://earlylearningin.org/the-long-term-impact-of-high-quality-early-learning-opportunities/>

Indiana Early Learning Advisory Committee. (2018). *2018 Annual Report*. Retrieved from ELAC: <http://www.elacindiana.org/documents/elac-2018-annual-report.pdf>

Indiana Early Learning Advisory Committee. (2018). *ELAC 2018 Annual Report Interactive Dashboard Data Sources and Definitions*. Retrieved from Indiana Early Learning Advisory Committee: <http://www.elacindiana.org/documents/elac-2018-annual-report-interactive-dashboard-data-sources-definitions.pdf>

Indiana Early Learning Advisory Committee. (2018). *Indiana Early Childhood Interactive Dashboard*. Retrieved from Indiana Early Learning Advisory Committee: <http://www.elacindiana.org/data/2018-elac-annual-report-interactive-dashboard/>

Indiana Family & Social Services Administration. (2018). *Wayne County Profile Report*. Retrieved from Family and Social Services Administration: <https://www.in.gov/fssa/ddrs/3399.htm>

Indiana First Steps System. (2006). *Best Practices in Early Intervention*. Retrieved from Indiana Family & Social Services Administration: https://www.in.gov/fssa/files/BestPractice_July_2006.pdf